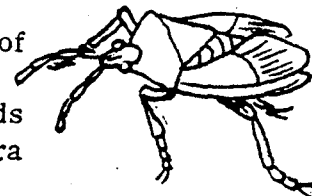


Have you ever watched a pond skater flash over the surface of the water on its long thin legs? Did you know it was a real bug?

Only a few insects are true bugs. The pond skater and aphids belong to this group of insects. Their scientific name is Hemiptera (hemi- half, ptera- wing) and describes their distinguishing characteristic. Only half of the wing case is hard.



Bugs have sharp mouth parts. This design allows them to suck up the blood or sap into their mouths. Bed bugs are blood-sucking insects. They are very flat and have claws on their feet so it is difficult to throw them off. Other true bugs are water boatmen and shield bugs.

The next time you see what you think is a bug, remember that to be a real bug, half of its wing case must be hard. With sharp mouth parts to accompany such interesting bodies, they even seem a bit ferocious. Still, ferocious, troublesome or gracefully skating across the water, it is the kind of wing that makes a bug, a bug.

* * * * *

1. The best title for this selection is:
 - (a) True Bugs
 - (b) Special Wings
 - (c) Mouths
 - (d) Skating Across Water
2. Hemiptera is the scientific characteristic meaning:
 - (a) half-legged
 - (b) half-wing
 - (c) half-mouth
 - (d) half-skeleton
3. The sharp mouth parts of a bug permit it to:
 - (a) chew food
 - (b) tear food
 - (c) suck up sap or blood
 - (d) crush food
4. A common blood-sucking insect which belongs to this group is the:
 - (a) aphid
 - (b) bed bug
 - (c) pond skater
 - (d) shield bug
5. Because blood-sucking insects are very flat and have claws on their feet, it is difficult:
 - (a) for them to cling
 - (b) for them to find a place to live
 - (c) for them to squeeze into a small space
 - (d) to throw them off
6. In this story, distinguishing means:
 - (a) setting it apart from others
 - (b) being famous
 - (c) smothering
 - (d) contrasting
7. From this article you could say that scientific names are often based on:
 - (a) structure
 - (b) name of discoverer
 - (c) attitude toward the insect
 - (d) size
8. From this article, you know that to live, true bugs need:
 - (a) ponds and lakes
 - (b) seeds and nuts
 - (c) plants and animals
 - (d) dried plants or wood